

FQ3 2026 Results

May 5th, 2026



Disclosures

Forward Looking Statements and Other Disclosures

Statements contained in this slide deck that are not historical fact may be forward looking statements within the meaning of Section 27A of the Securities Act of 1933 and Section 21E of the Securities Exchange Act of 1934. These forward-looking statements can be identified by the use of forward-looking terminology such as “anticipate,” “believe,” “continue,” “could,” “estimate,” “expect,” “may,” “plan,” “seek,” “should,” “will,” “would” “optimistic” or similar expressions and the negatives of those terms. Such forward looking statements may include statements regarding, among other things, guidance for the fourth quarter of fiscal year 2026 and updated full year fiscal 2026 guidance, expectations related to strong customer engagements, our expectations related to our expected capacity and facilities by year end FY26, our efforts to strengthen our operational and financial execution, our focus on capturing the next wave of AI and IT infrastructure demand, scaling the Company’s manufacturing and streamlining operations and logistics with automation, expanding the Company’s global manufacturing footprint, meeting the Company’s long-term targets and capitalizing on the growing market opportunity in the long-term, and the expansion of our DCBBS product offerings. Such forward looking statements do not constitute guarantees of future performance and are subject to a variety of risks and uncertainties that could cause our actual results to differ materially from those anticipated, including: (i) our quarterly operating results may fluctuate, (ii) as we increasingly target larger customers and larger sales opportunities, our customer base may become more concentrated, our cost of sales may increase, our margins may be lower and our sales may become less predictable for a variety of reasons, many of which are not in our control, (iii) the average sales prices for our server solutions could decline if customers do not continue to purchase our latest generation products or additional components, and (iv) adverse economic conditions could affect our business, including, but not limited to, increased tariffs. In addition, as the Company has disclosed, the Board is conducting an independent review of certain transactions in connection with export-control issues. The outcome of that investigation could affect our forecasts, these preliminary results and prior period results. Certain prior period amounts have been reclassified to conform to the current period presentation. Additional factors that could cause actual results to differ materially from those projected or suggested in any forward looking statements are detailed in our filings with the Securities and Exchange Commission, including those factors discussed under the caption “Risk Factors” in such filings, particularly in our Annual Report on Form 10-K for our fiscal year ended June 30, 2025 and any subsequent Quarterly Report on Form 10-Q.

Financial Information Is Preliminary and May Be Subject to Change

The unaudited interim financial information presented in this slide deck is preliminary. The final financial results reported for this period may also differ from the results reported in this deck.

The financial results presented reflect the Company's preliminary estimated unaudited financial results, based upon information available to the Company as of the date of this slide deck. The Company has provided preliminary estimates of financial results primarily because its financial closing procedures for the quarter ended March 31, 2026 are not yet complete. The data are not a comprehensive statement of the Company's results for such periods, and the actual results may differ materially from these preliminary estimated data. The Company's actual results remain subject to the completion of management's and its audit committee's review and other financial closing processes as well as the completion and preparation of its financial data for such periods. The Company's independent registered public accounting firm has not audited, reviewed, compiled or performed any procedures with respect to such preliminary data. During the course of the preparation of the Company's financial statements and related notes and the completion of the review for such periods, additional adjustments to the preliminary estimated financial information presented here may be identified, and its final results for these periods may vary from these preliminary estimates. This preliminary estimated data should not be considered a substitute for the financial statements to be prepared in accordance with accounting principles generally accepted in the United States and to be filed with the Securities and Exchange Commission once available.

Use of Non-GAAP Financial Measures

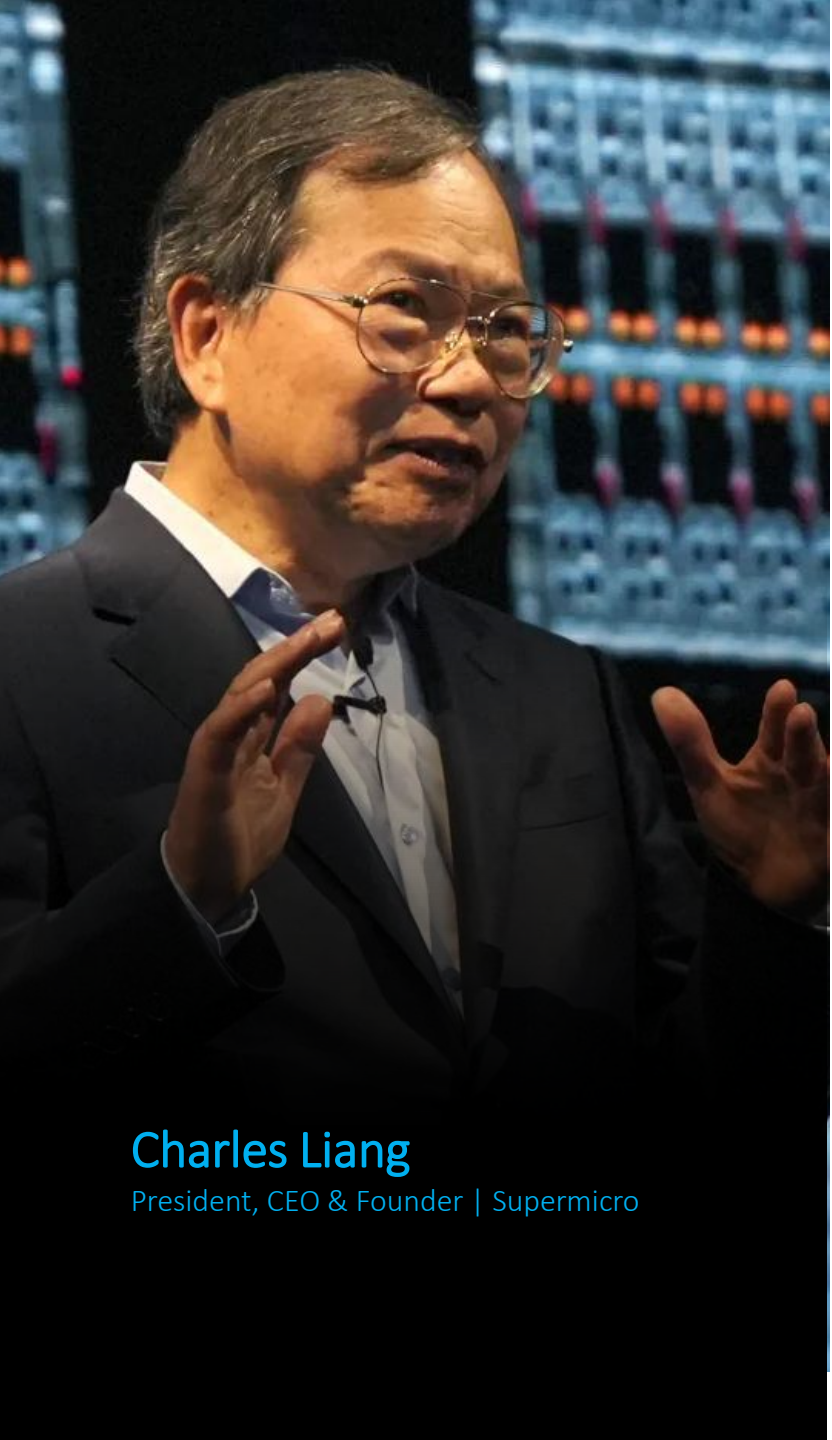
To supplement its condensed consolidated financial results presented in accordance with United States Generally Accepted Accounting Principles (“GAAP”), the Company uses non-GAAP measures that are for certain items from the most directly comparable GAAP measures. The specific non-GAAP measures presented below are: gross profit, gross margin; operating expenses; net income; net income per common share; diluted net income; diluted net income per common share, earnings before interest, taxes, depreciation, and amortization, (“EBITDA”); and effective tax rate. Management believes these non-GAAP measures provide useful information to investors by offering a consistent basis for comparing the Company's performance across periods, excluding items that are not reflective of our core operating results. These non-GAAP measures are not prepared in accordance with GAAP or intended to be a replacement for GAAP financial data; and therefore, should be reviewed together with the GAAP measures and are not intended to serve as a substitute for results under GAAP, and may be different from non-GAAP measures used by other companies.

We exclude the following adjustments from our non-GAAP financial measures:

Non-GAAP Adjustments

- Stock-based compensation: Stock-based compensation relates primarily to our equity incentive awards. Stock-based compensation is a non-cash expense that is dependent on market forces that are difficult to predict. We believe that this adjustment for stock-based compensation provides investors with a basis to measure the company's core performance, including compared with the performance of other companies, without the period-to-period variability created by stock-based compensation
- EBITDA adjustments: When calculating EBITDA, in addition to the adjustments described above, we exclude the impact of Interest expense, Income tax (provision) benefit, and Depreciation and amortization during the period.

Pursuant to the requirements of SEC Regulation G, please see the tables in the appendix for the reconciliations of the most directly comparable GAAP to Non-GAAP measures. These should be read together with the financial statements prepared in accordance with GAAP.



Charles Liang

President, CEO & Founder | Supermicro

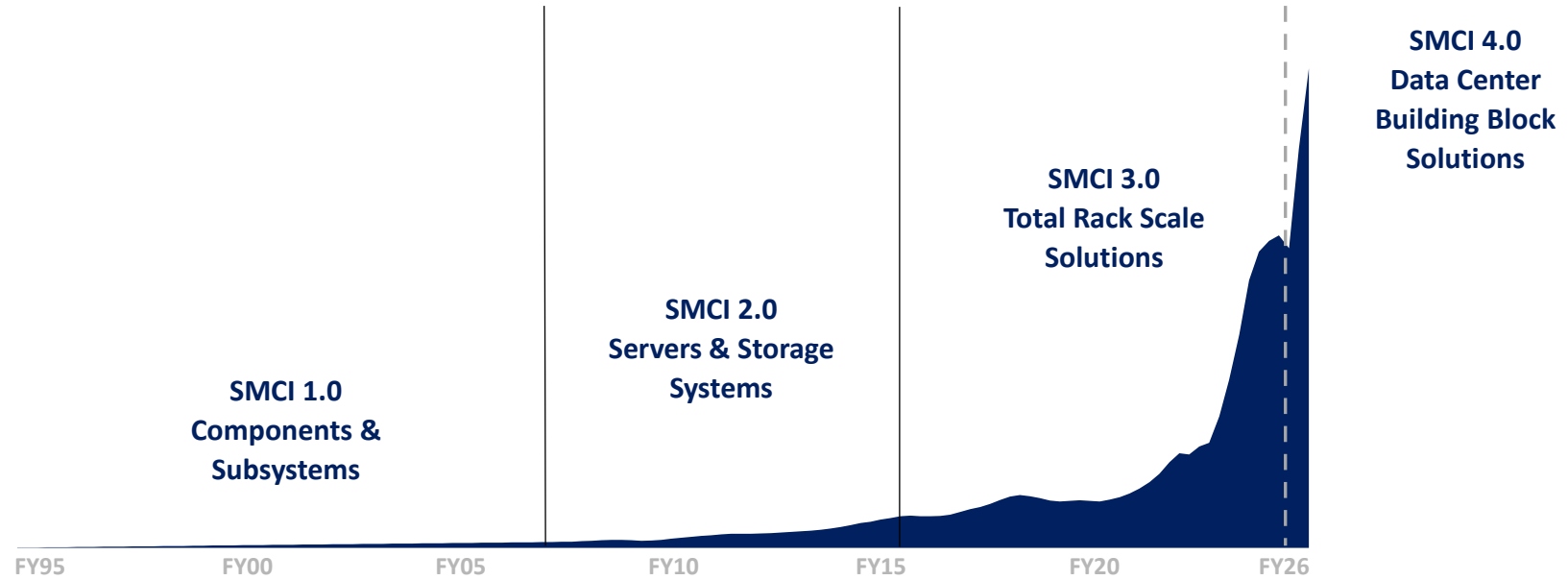
CEO Takeaways

IT and AI Infrastructure Solutions Leadership

- **Enabling** customer to scale new AI factories, delivering high volume NVIDIA GB300 NVL72, HGX B300, RTX6000Pro, and AMD MI350/355 worldwide
- **Continuing** the expansion of DCBBS product offerings, including racks, DLC, L2A, chilled doors, power shelves, BBU, switches, and SuperDCM and Rack-Scale management software tools.
- **Delivering** high volume NVIDIA GB300 NVL72, HGX B300, RTX6000Pro, and AMD MI350/355 worldwide with TTM
- **Preparing** for next generation Nvidia, AMD GPU/CPU, Intel, and ARM AGI CPU, and others
- **Scaling** manufacturing to support expansion of partner platform solutions and scale infrastructure builds, and streamlining operations and logistics with automation for business efficiency

Supermicro Momentum

Supermicro Trailing 12 Month Revenue



Market



Rack-Scale PnP FY26

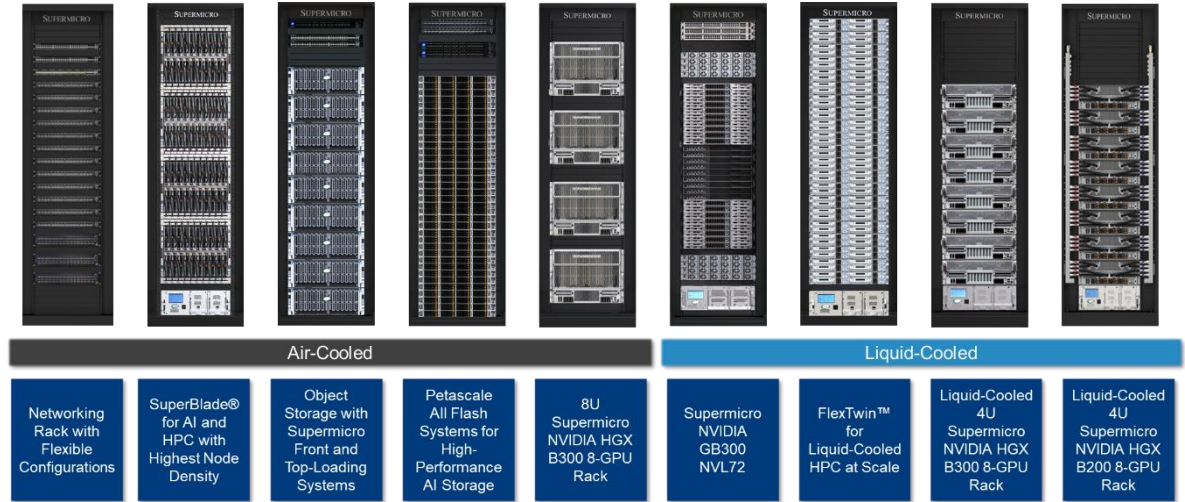
Optimized Air & DLC Rack-Scale Solutions

6,000 Racks/capacity per month by year end FY26

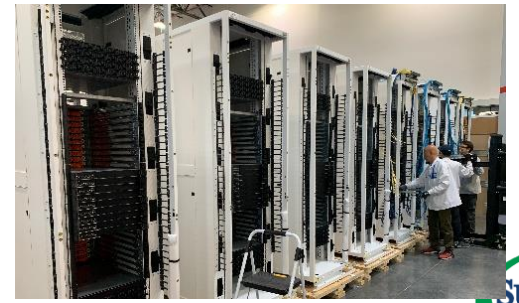
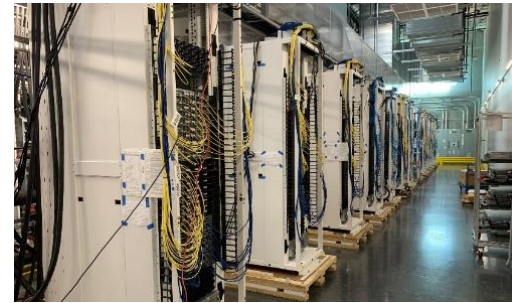
3,000 DLC racks/capacity per month by year end FY26

150kW Racks shipping in volume (250/ 500kW soon)

75MW facilities worldwide



Enabling next-generation AI training and inference with scalable, rack-scale, energy-efficient infrastructure.



DCBBS: One-Stop Shop for Total IT/AI Needs

DC Infrastructure Solutions

CDU, water tower, dry-towers, chilled doors, A/C, piping, modular containers and more...

Software Solutions

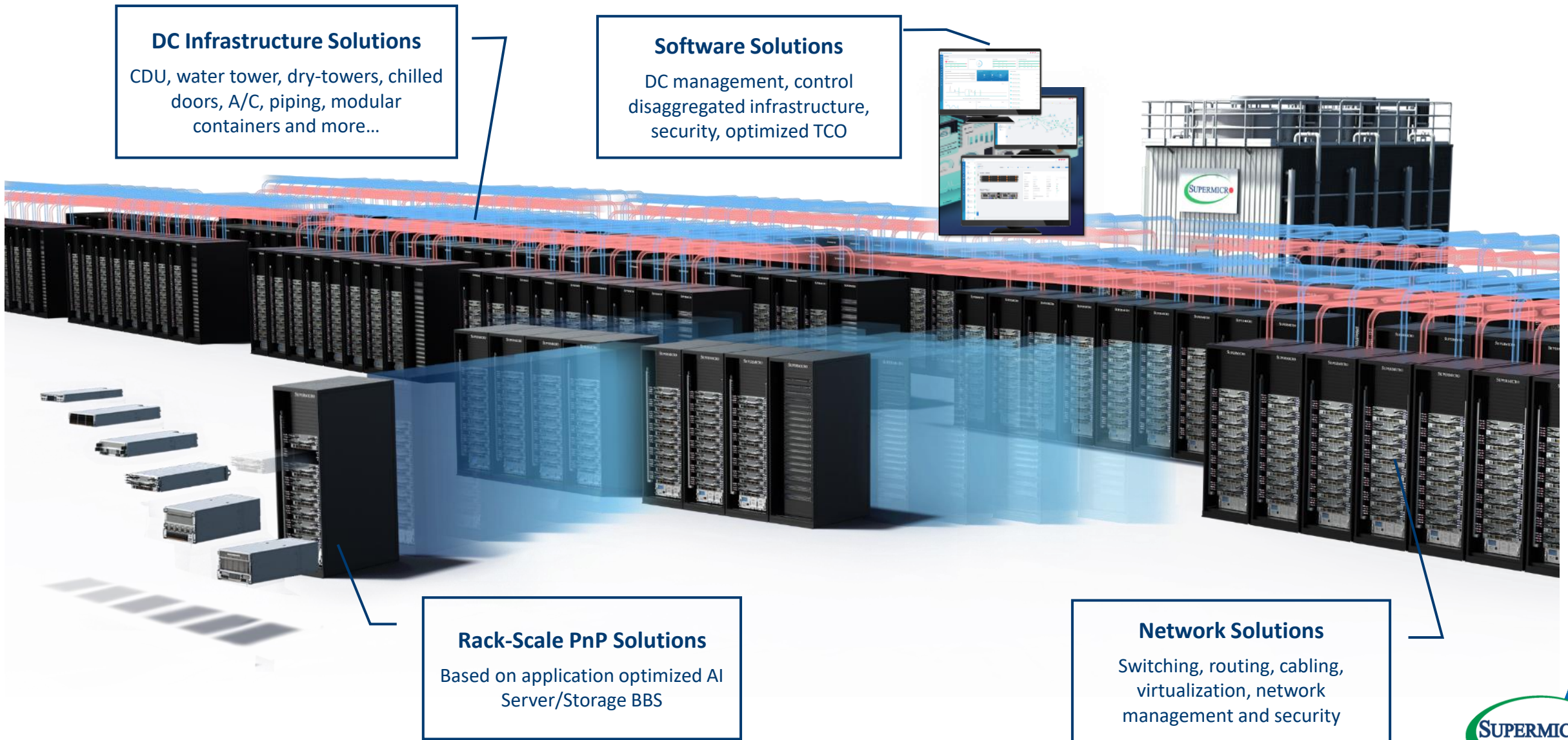
DC management, control disaggregated infrastructure, security, optimized TCO

Rack-Scale PnP Solutions

Based on application optimized AI Server/Storage BBS

Network Solutions

Switching, routing, cabling, virtualization, network management and security



DCBBS Components

Solutions to fully outfit liquid cooled AI factories and data centers



Rack

- Optimized airflow & thermal efficiency
- Optimized cable management
- Robust, enterprise-grade durability



Switches

- 400G/800G solutions with DLC
- Advanced enterprise SONiC and ONIE support
- Open design with wide range of validated transceivers and cables



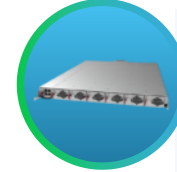
Software

- SuperCloud Composer for DCBBS
- SuperCloud Automation Center
- SuperCloud Developer Console
- SuperCloud Director



In-Rack CDU

- Supports cooling capacity up to 250kW
- Redundant pump design
- Integration with EIA and OPC racks



Power Shelf

- Provides up to 33kW per shelf
- Power solutions for direct current
- Available in standard 19" and 21" (ORv3) rack design



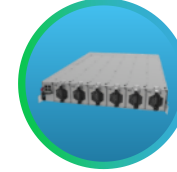
Deployment/
Service

- Planning and Validation
- Onsite Deployment
- Onsite Support
- Build/retrofit Service



Chilled Door

- Supports cooling capacity of 50kW or 80kW
- Intelligent control and anti-condensation system



Battery Back Up

- Provides direct current back up power to ensure safety and continued operation



Cooling Tower

- Supports cooling capacity from 1MW to 50MW
- Low maintenance with close looped design
- Water and Dry Tower options



Generator

- Standby generators provide fast-start, high step-load acceptance with native paralleling and seamless automatic transfer switch integration



Expanding Global Manufacturing Footprint

High-Volume Manufacturing & Cost Optimization
Scale-Driven Cost Efficiency

- **Silicon Valley Green Computing Park**
 - Rack-Scale Integration (Liquid Cooling)
 - DCBBS, Enterprise and Cloud Services
 - Expanded with 8 New Buildings
- **APAC Science and Tech Center**
 - Rack-Scale and DCBBS manufacturing
- **Supermicro Malaysia Campus**
 - Subsystem and Rack-Scale Production online
- **Manufacturing Expansion Progress**
 - New Silicon Valley Campus in progress
 - New Taiwan/Bade expansion site in progress
 - New Americas (Texas/Mexico) site in progress
 - New Middle East site in progress



Q3 FY2026 Highlights

	Q3FY26	QoQ	YoY
Revenue	\$10,243M	(19%)	123%
Gross Margin (Non-GAAP)*	10.1%	370bps	40bps
Diluted Earnings Per Share (Non-GAAP)*	\$0.84	\$0.15	\$0.53
Cash Flow from Operations	(\$6,615M)	(\$6,591M)	(\$7,242M)

*See Appendix for the reconciliations of these non-GAAP financial measures to their comparable GAAP measures. Non-GAAP financial measures should not be considered in isolation from, or as an alternative to, their comparable GAAP measures.

Revenue & EPS Outlook

Q4 FY26 Outlook

Revenue \$11.0B - \$12.5B

GAAP diluted EPS \$0.53 - \$0.67

Non-GAAP diluted EPS \$0.65 - \$0.79

Full Year FY26 Outlook

Revenue \$38.9B - \$40.4B

*The outlook for Q4 of fiscal year 2026 GAAP diluted net income per common share includes approximately \$95 million in expected stock-based compensation expense, net of the related tax effects of \$30 million, which are excluded from non-GAAP diluted net income per common share.

APPENDIX



GAAP to Non-GAAP Reconciliation (1 of 4)

Reconciliation of GAAP Net Income to Adjusted EBITDA:

	Three Months Ended		Nine Months Ended	
	March 31, 2026	March 31, 2025	March 31, 2026	March 31, 2025
GAAP Net Income	\$ 483,387	\$ 108,777	\$ 1,052,236	\$ 853,700
Interest expense	64,483	13,402	114,772	37,291
Income tax provision	126,887	5,843	266,199	137,544
Depreciation and amortization	13,605	10,910	38,959	29,467
Stock-based compensation	125,934	84,704	305,558	230,840
Loss on extinguishment of convertible notes	—	30,251	—	30,251
Adjusted EBITDA	\$ 814,296	\$ 253,887	\$ 1,777,724	\$ 1,319,093
Adjusted EBITDA % of net sales	7.9 %	5.5 %	6.4 %	8.1 %

Reconciliation of GAAP to Non-GAAP Gross Margin:

	Three Months Ended		Nine Months Ended	
	March 31, 2026	March 31, 2025	March 31, 2026	March 31, 2025
GAAP Gross Profit	\$ 1,018,680	\$ 440,218	\$ 2,284,620	\$ 1,885,820
Stock-based compensation	11,522	7,060	25,400	17,713
Non-GAAP Gross Profit	\$ 1,030,202	\$ 447,278	\$ 2,310,020	\$ 1,903,533
GAAP gross margin (%)	9.9 %	9.6 %	8.2 %	11.6 %
Stock-based compensation (%)	0.2 %	0.1 %	0.1 %	0.1 %
Non-GAAP gross margin (%)	10.1 %	9.7 %	8.3 %	11.7 %

GAAP to Non-GAAP Reconciliation (2 of 4)

Reconciliation of GAAP to Non-GAAP Operating Expenses:

	Three Months Ended		Nine Months Ended	
	March 31, 2026	March 31, 2025	March 31, 2026	March 31, 2025
GAAP Operating Expenses	\$ 392,812	\$ 293,438	\$ 1,002,198	\$ 861,217
Adjustments to operating expenses				
GAAP R&D operating expenses	215,659	162,857	569,734	453,329
Stock-based compensation	(83,115)	(54,254)	(200,090)	(141,590)
Non-GAAP R&D operating expenses	132,544	108,603	369,644	311,739
GAAP S&M operating expenses	89,510	59,978	210,516	208,400
Stock-based compensation	(12,276)	(9,923)	(33,700)	(27,245)
Non-GAAP S&M operating expenses	77,234	50,055	176,816	181,155
GAAP G&A operating expenses	87,643	70,603	221,948	199,488
Stock-based compensation	(19,021)	(13,467)	(46,368)	(44,292)
Non-GAAP G&A operating expenses	68,622	57,136	175,580	155,196
Non-GAAP Operating Expenses	\$ 278,400	\$ 215,794	\$ 722,040	\$ 648,090

GAAP to Non-GAAP Reconciliation (3 of 4)

Reconciliation of GAAP to Non-GAAP Net Income:

	Three Months Ended		Nine Months Ended	
	March 31, 2026	March 31, 2025	March 31, 2026	March 31, 2025
GAAP Net Income - basic	\$ 483,387	\$ 108,777	\$ 1,052,236	\$ 853,700
Adjustments related to stock-based compensation:				
Cost of sales	11,522	7,060	25,400	17,713
Operating expenses	114,412	77,644	280,158	213,127
Total adjustments to GAAP income from operations	125,934	84,704	305,558	230,840
Other expense	—	30,251	—	30,251
Total adjustments to GAAP Other expense	—	30,251	—	30,251
Total adjustments to GAAP income before income tax provision	125,934	114,955	305,558	261,091
Income tax effect of non-GAAP adjustments	(28,713)	(29,706)	(70,373)	(64,715)
Non-GAAP net income - basic	\$ 580,608	\$ 194,026	\$ 1,287,421	\$ 1,050,076
GAAP net income - basic	\$ 483,387	\$ 108,777	\$ 1,052,236	\$ 853,700
Convertible notes interest charge, net of tax	17,888	—	16,472	1,777
GAAP net income - diluted	\$ 501,275	\$ 108,777	\$ 1,068,708	\$ 855,477
Non-GAAP net income - basic	\$ 580,608	\$ 194,026	\$ 1,287,421	\$ 1,050,076
Convertible notes interest charge, net of tax	17,888	—	16,472	1,777
Non-GAAP net income - diluted	\$ 598,496	\$ 194,026	\$ 1,303,893	\$ 1,051,853
Weighted-average shares used in the calculation of net income per common share:				
Basic - GAAP	600,205	595,041	597,928	592,349
Basic - Non-GAAP	600,205	595,041	597,928	592,349
Diluted - GAAP	692,189	621,809	673,598	625,272
Non-GAAP adjustment	16,961	14,108	14,896	11,645
Diluted - Non-GAAP	709,150	635,917	688,494	636,917

GAAP to Non-GAAP Reconciliation (4 of 4)

Reconciliation of GAAP to Non-GAAP EPS:

	Three Months Ended		Nine Months Ended	
	March 31, 2026	March 31, 2025	March 31, 2026	March 31, 2025
GAAP Net Income per common share - basic	\$ 0.81	\$ 0.18	\$ 1.76	\$ 1.44
Adjustments to GAAP:				
Stock-based compensation	0.21	0.14	0.51	0.39
Loss on extinguishment of convertible notes - basic	—	0.05	—	0.05
Income tax	(0.05)	(0.04)	(0.12)	(0.11)
Non-GAAP Net Income per common share - basic	\$ 0.97	\$ 0.33	\$ 2.15	\$ 1.77
GAAP net income per common share - diluted	\$ 0.72	\$ 0.17	\$ 1.59	\$ 1.37
Adjustments to GAAP:				
Stock-based compensation	0.16	0.14	0.40	0.33
Loss on extinguishment of convertible notes - diluted	—	0.05	—	0.05
Income tax	(0.04)	(0.05)	(0.10)	(0.10)
Non-GAAP Net Income per common share – diluted	\$ 0.84	\$ 0.31	\$ 1.89	\$ 1.65

GAAP to Non-GAAP Effective Tax Rate:

	Three Months Ended		Nine Months Ended	
	March 31, 2026	March 31, 2025	March 31, 2026	March 31, 2025
GAAP effective tax rate	20.8 %	5.1 %	20.2 %	13.9 %
Total adjustments to GAAP provision to income tax	0.3 %	10.4 %	0.5 %	2.3 %
Non-GAAP effective tax rate	21.1 %	15.5 %	20.7 %	16.2 %



www.supermicro.com